

SIEMENS



www.siemens.com/luminos-drf

The new Luminos dRF

The only 2-in-1 system with Human Touch Technology

Answers for life.

The new Luminos dRF – The only 2-in-1 system with Human To

Siemens championed the world's first 2-in-1 system for radiography and fluoroscopy. And now we introduce: The new Luminos dRF with Human Touch Technology – building on a winning team and striving to reach your goals in image quality, flexibility, efficiency and investment security.

SmartView

→ Keeps your target in sight



Touch Technology



SmartMove

→ Saves you time and effort



Human Touch Technology

For a new generation of 2-in-1 system, we developed Human Touch Technology – a unique approach to bring human needs and high-tech together, for the benefit of both patients and staff.

The highlights of Human Touch Technology:

■ SmartMove

One touch to move the system directly to where you need it

With a single touch of a button, the intelligent system finds the shortest and fastest possible way to the position you need. With SmartMove* the system moves from one position to the next as defined in the organ programs. With speed, accuracy, and consistency.

■ SmartTouch

The system moves only on human touch

New joysticks that only allow system movement with the touch of a human hand – preventing unintentional system movements and improving safety for patients and staff.

■ SmartView

One touch to get the image you need

Fast and easy display of images from endoscopy, ultrasound or review workstations. In the examination room. Side by side. With a single touch of a button. SmartView* allows you to easily switch between modalities to get the comprehensive view you need.

SmartTouch

→ Improves safety for patients and staff

*Option

One single system for dual utilization

As a true 2-in-1 solution, the new Luminos dRF offers you the advantages of both digital fluoroscopy and digital radiography in a single system.

The highlights of the new Luminos dRF:

2-in-1

The 2-in-1 utilization of the new Luminos dRF opens opportunities to maximize your workflow efficiency in fluoroscopy and radiography – in one room.

48 cm

The height-adjustable table starts at a low of 48 cm (19"), for more comfortable examinations for patients and staff.

43 cm x 43 cm

The large 43 cm x 43 cm (17" x 17") dynamic flat detector delivers excellent distortion-free fluoroscopy and radiography images.





2-in-1 system

→ For radiography and fluoroscopy

43 cm x 43 cm

→ Excellent coverage

48 cm

→ Easier patient transfer

2-in-1 system for radiography and fluoroscopy

Proven 2-in-1 efficiency saves time, space and costs in both radiography and fluoroscopy.

Excellence in fluoroscopic applications



Fluoroscopy with up to 30 p/s



Easier interventions with excellent patient access from all sides

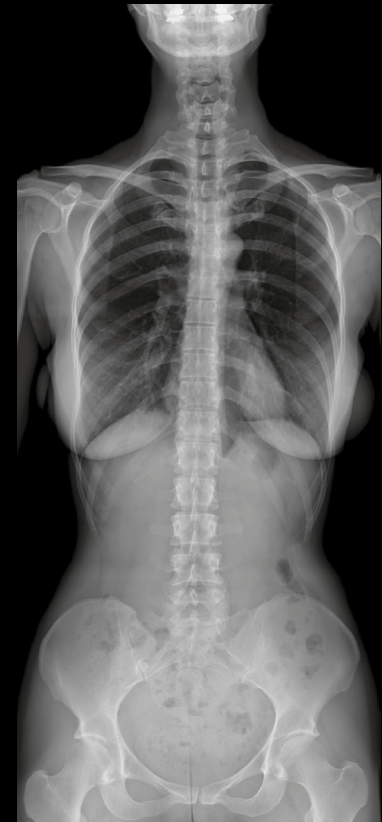
Excellence in radiographic applications



High resolution imaging



Large coverage 43 cm x 43 cm detector



Long spine and long leg imaging with the Ortho imaging package*

2-in-1 efficiency

Whether used as a one-room solution, or part of a multiple room department, the new Luminos dRF is a powerful addition to a broad range of clinical environments. The system saves space and helps reduce the costs of training and maintenance.

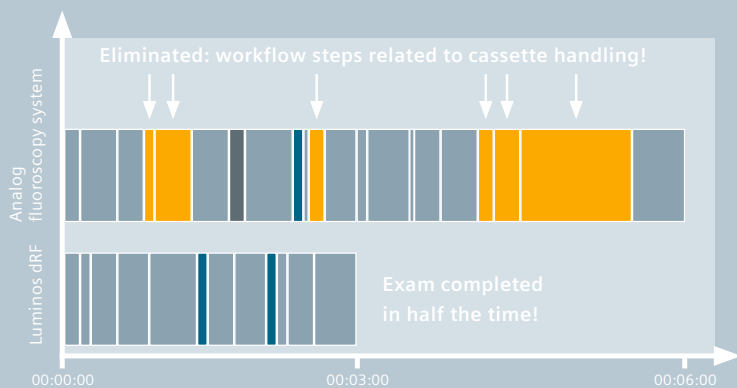
Time-consuming cassette handling and processing are also history. Images can be reviewed almost instantly, dramatically shortening examination times for you and your patients.

*Option

“The Luminos dRF is one of the most complete X-ray systems. With its numerous functionalities and its innovative large-coverage flat detector, it can be used for many different examinations ranging from fluoroscopy studies to high-resolution radiographic imaging, which allows us to easily react to changing examination mixes.”

Professor Dr. Yvan Palmers
 Head of the Medical Imaging Department
 Ziekenhuis Oost-Limburg, Genk, Belgium

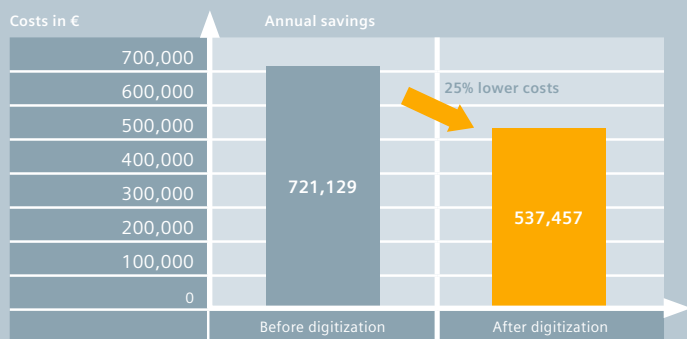
2-in-1 efficiency – in time



- Cassette handling
- Generator settings
- Acquisition
- Other exam steps

With Luminos dRF, cassette handling is eliminated, reducing the examination time by more than half.

2-in-1 efficiency – in costs



Average savings of € 183,672 per year translate into projected total savings of € 918,361 over a 5-year period.

Proven efficiency

For the Ziekenhuis Oost-Limburg radiology department in Genk, Belgium, the 2-in-1 capabilities of Luminos dRF paid off. The increase in through-put allows more patients to be examined in three rooms rather than six.

The resulting reduction in the number of rooms, lower costs for consumables and increased flexibility in staff allocation allows a 25% reduction in costs.

A low table height of 48 cm

The new Luminos dRF is designed to minimize the physical effort and stress of procedures for patients and staff.



48 cm – the height of comfort

The table's lowest height setting of just 48 cm (19") enables easy patient transfer to the system. With the continuously adjustable setting you can choose your optimal working height to a maximum of 98 cm (39"). The highly flexible positioning also allows examinations to be conducted with the patient seated in a wheelchair or lying on a trolley.

From head to toe

With a 210 cm x 80 cm (83" x 32") tabletop, the new Luminos dRF easily accommodates very large patients. The exceptional longitudinal travel range of the tabletop of 80 cm (32") in each direction enables imaging coverage from head to toe. Saving time and effort required to reposition the patient.

*Option

“One of the most important benefits is the adjustable table height. If you’re a small child, coming into a room where everything is towering above you can be very intimidating. The fact that we can bring the table down to a child’s level is fantastic.”

Dr. Caren Landes
Consultant Pediatric Radiologist
Alder Hey Children’s Hospital, Liverpool, England



Access from all sides

The compact, open design provides excellent access to the patient from all sides. Even from the back of the table. Using one of the two patient transfer buttons, the system is quickly brought into a pre-set vertical or horizontal position that is optimized for easy patient transfer to and from the system. The new Luminos dRF enables excellent patient care, with easier positioning and safer patient transfers.

Special CARE for your smallest patients

The low table height and excellent patient access enable easier positioning. They also help to reassure and calm the patient, especially in pediatrics. Combined with the comprehensive CARE dose reduction features, a more relaxed and cooperative patient leads better results with less dose.

SmartTouch – Improves safety for patients and staff

Joysticks that are activated only with the touch of a human hand – preventing unintentional system movements. And a new generation of proportional switching means the joysticks translate your hand movements one-to-one into direction and speed – keeping you in control.



Tableside controls

Because detail matters in patient care. Comprehensive tableside controls allow easy access to relevant functions without having to leave the patient's side.



Touch user interface

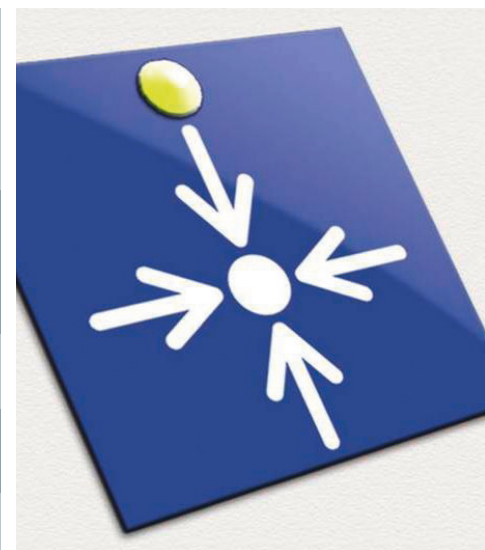
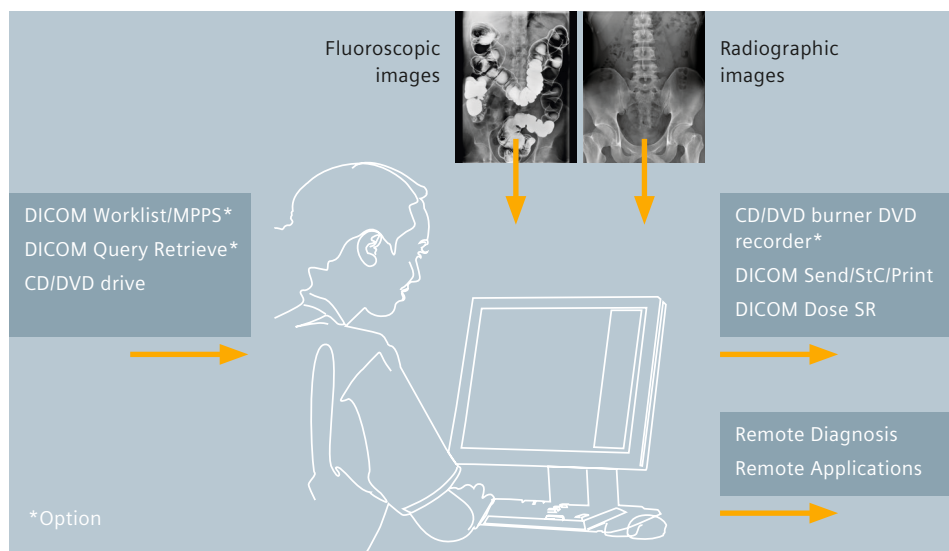
The compact control console with an intuitive touch user interface allows easy access to all system functions at your fingertips .

SmartTouch joysticks

SmartTouch is activated only with the touch of a human hand – preventing unintentional system movements.

SmartMove – Saves you time and effort

With SmartMove, the new Luminos dRF moves directly from one position to the next. And as the positions are defined in the organ program, the entire examination can be performed from registration to documentation with just one intuitive user interface.



One-stop workflow

The new Luminos dRF can be seamlessly integrated into your workflow. The *syngo* user interface is common to all Siemens systems and the innovative Netviewer software gives you online access to system optimization and training by Siemens specialists. The result is more efficient examinations, easier training and faster service. Helping you to maximize the potential of your system.

One touch to move

Using the Siemens unique SmartMove*, the new Luminos dRF moves from one position to the next with a single touch of a button. The intelligent system finds the shortest and fastest possible way to the position you need. And when combined with a wall stand*, the system tube tracks the height of the Bucky automatically. What's more, as the positions are defined in the organ program, you are able to achieve a new level of consistency in each and every exam.

*Option

Flexibility that pays off

The new Luminos dRF can be configured to cover a wide range of applications, allowing a solution to be tailored to your clinical and financial needs.



Individual configurations

Depending on your individual needs and preferences, you can select from a range of options including generator power, remote-controlled compression device, exam room console and several monitor configurations. A wide range of accessories for specific applications is also available, such as pediatrics or urology.

Advanced applications for increased utilization

The new Luminos dRF can also be configured with advanced applications such as tomography, digital

subtraction angiography (DSA) and long leg and spine imaging. Its future-oriented, modular design supports flexible system options and upgrades allowing you to adapt to current and future examination profiles and to maximize system utilization.

One touch to get the image you need

SmartView* allows you to display live images from multiple sources such as endoscopy, ultrasound or review workstations on an integrated second monitor – right next to your radiography or fluoroscopy images. And with a single touch of a button you can easily switch between the different modalities to get a comprehensive view for your diagnosis.

*Option

Expanded projection flexibility

The new Luminos dRF and the Ysio options are part of one platform that is unique to Siemens. You can combine the freedom and flexibility of the industry leading Ysio digital radiography system with the champion of 2-in-1 efficiency.



All part of the one family

With your choice from the ceiling-suspended tube*, wall stand* and wireless detector (wi-D™)*, you are adding additional members of a product family. So the new Luminos dRF and Ysio options combine to form a single system. With one user interface, one patient registration and one patient documentation for all radiography and fluoroscopy images. And all with the same excellent image quality that you expect from Siemens.

Flexible digital radiography

Ysio options expand the freedom and flexibility of 2-in-1 efficiency. The wi-D* offers highly flexible, digital imaging, including patients in wheelchairs and in beds. The ceiling-suspended tube* with MaxTouch places organ programs and imaging parameters directly at your fingertips for fast, convenient access. And with automatic tracking of the height of the wall stand* with either the system or the ceiling-suspended tube, you have the fastest and smoothest wall stand workflow available.

*Option

Details to support accurate diagnoses

The 43 cm x 43 cm flat detector and unique Siemens imaging technologies deliver excellent patient coverage with high-quality, distortion-free images in radiography and fluoroscopy.



43 cm x 43 cm (17" x 17") flat detector



With DiamondView Plus



With DDO



33 cm (13") image intensifier



Without DiamondView Plus



Without DDO

Large dynamic flat detector

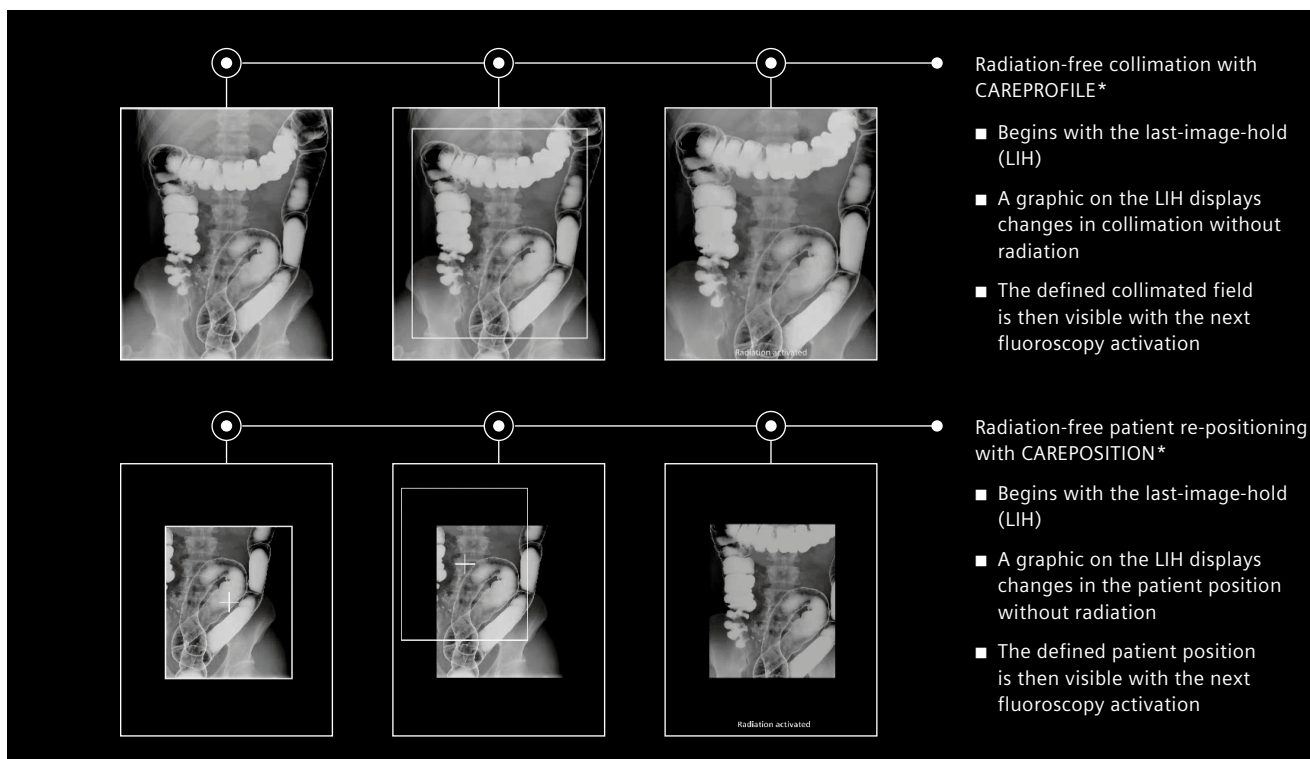
Combining superb coverage with exceptional image quality, the 43 cm x 43 cm (17" x 17") flat detector delivers distortion-free high-quality dynamic sequences and static images that provide detailed patient information with up to 3.4 lp/mm.

Enhanced image quality

Unique Siemens image enhancement technologies improve image quality without increasing dose. DiamondView Plus reduces noise while increasing sharpness and soft tissue detail of radiographic images. Digital Density Optimization (DDO) improves image contrast and detail recognition in critical regions of fluoroscopic images.

Comprehensive dose saving

The comprehensive CARE dose reduction features decrease radiation exposure for patients and staff without compromising image quality. The dynamic flat detector also provides you a choice between low-dose digital fluororadiography (DFR) and full-resolution radiography (RAD) images.



CAREFILTER

Automated copper filter selection that reduces the body entrance dose.

CAREMATIC

Automatic calculation and optimization of exposure parameters.

CAREMAX*

Dose area measurement and monitoring.

CAREVISION

Pulse frequencies of 15, 10, 7.5, and 3 pulses per second for low-dose imaging in real time.

CAREPROFILE*

Radiation-free collimation is achieved using the last-image-hold for orientation.

CAREPOSITION*

Radiation-free patient re-positioning by using a virtual field display on the last-image-hold.

FluoroLoop*

Background memory buffer for retrospective viewing and storage of fluoroscopic sequences, reducing the need for re-exposure.

Removable grid

Reduces dose in extremities examinations and pediatric patients.

*Option

The information in this document contains general descriptions of the technical options available and may not always apply in individual cases. The required features should therefore be specified in each individual case at completion of contract.

The statements by Siemens' customers described herein are based on results that were achieved in the customer's unique setting. Since there is no "typical" hospital and many variables exist (e.g., hospital size, case mix, level of IT adoption) there can be no guarantee that other customers will achieve the same results.

Siemens reserves the right to modify the design and specifications contained herein without prior notice. Please contact your local Siemens sales representative for the most current information.

Original images always lose a certain amount of detail when reproduced.

In the interest of complying with legal requirements concerning the environmental compatibility of our products (protection of natural resources, waste conservation), we recycle certain components. Using the same extensive quality assurance measures as for new components, we guarantee the quality of these recycled components.

For accessories, see:
www.siemens.com/medical-accessories

Global Business Unit

Siemens AG
Medical Solutions
X-Ray Products
Henkestr. 127
DE-91052 Erlangen
Phone: +49 9131 84-0

Global Siemens Headquarters

Siemens AG
Wittelsbacherplatz 2
80333 Muenchen
Germany

Global Siemens Healthcare Headquarters

Siemens AG
Healthcare Sector
Henkestrasse 127
91052 Erlangen
Germany
Phone: +49 9131 84-0
www.siemens.com/healthcare

Legal Manufacturer

Siemens AG
Wittelsbacherplatz 2
DE-80333 Muenchen
Germany