

SIEMENS

Luminos Agile Max

A more RADical way in fluoroscopy

siemens.com/luminos-agile-max





It's more. It's MAX.

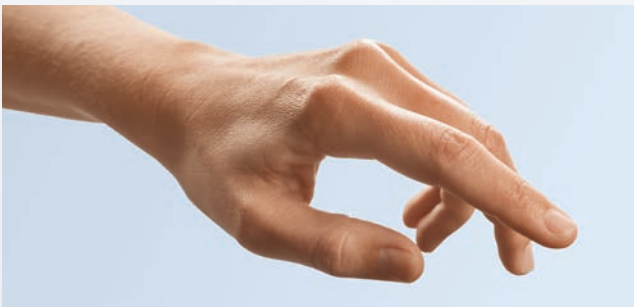
MAX – Multiple Advances in X-ray

It's more than just single features or functions. MAX offers multiple advances that touch multiple aspects of your daily work in radiography and fluoroscopy. MAX enables you to achieve the best image quality in the shortest amount of time with your system.

MAX is a unique Siemens innovation that is available with the Luminos Agile Max and Luminos dRF Max fluoroscopy systems, as well as the Ysio Max radiography system.

MAX is a result of Intelligent Innovation, our unique Siemens' way of seamlessly networking all system elements to give you more quality, synergies, and efficiency.

Experience the difference MAX makes with its multiple benefits, highlighted within MAX assistance and MAX detection.



MAX assistance

It's more than just ease of use. MAX is your personal intelligent assistant. MAX proactively works for you, supports and protects you, even in the most challenging situations. For the best possible image with your system each and every time.

For example:

MAXalign – Get the tube and detector right every time. For reducing repeat exposures and saving time and patient dose.



MAX detection

It's more than just the detector plate. It's about applying Intelligent Innovation at every step of the image formation. For the right image each and every time.

For example:

MAX wi-D and MAX mini – lighter and thinner wireless detectors that are the right size and easy to swap. For MAX performance, image quality, and efficiency.



Luminos Agile Max

A more RADical way in fluoroscopy

This patient-side system offers you advantages on more than one level. It brings you MAX – combining the proactive support of MAX assistance and the highly comprehensive imaging technology of MAX detection.

Luminos Agile Max is the first patient-side fluoroscopy system to offer:

Safer use

A height-adjustable table enables you to position and transfer the patient easily and safely. You can choose a comfortable working height and the open design allows access to the patient from all sides. This increase in agility frees you to interact with your patients and to focus on their individual needs.

Sharper imaging

The large 43 cm x 43 cm (17" x 17") MAX dynamic flat panel detector delivers more patient coverage in both dynamic and static imaging. Unique Siemens CARE features such as CAREPOSITION* ensure you get the right image at the right dose.

Stronger synergies

With the Ysio Max option, you have MAX dual use. This gives you the opportunity to maximize room use and exam mix in both radiography and fluoroscopy. With MAXswap, the right way to share, you can maximize the utilization of your MAX wi-D* and MAX mini* detectors.

Safer, sharper, and stronger than ever before, Luminos Agile Max offers you a great investment. Its impact could be even more RADical.

*Option



MAX assistance –
Works. Supports. Protects.

Safer use with a height-adjustable table





Wide patient opening



High table weight capacity



Protected by OPTIGrip

The height-adjustable table is at the heart of Luminos Agile Max. Together with conveniently placed controls and easy positioning, it enables you to complete your tasks faster and safer. Due to its compact installation, the table makes efficient use of any radiography or fluoroscopy room.

MAX works

The height-adjustable table – from 65 cm to 112 cm (26"–44") – has a high weight capacity of up to 275 kg (606 lbs) and an extra-wide tabletop of 80 cm (31.5"), making it ideal for patients of all sizes. Even standard wheelchairs fit effortlessly in the 60 cm (24") patient opening. Because the table offers barrier-free access, you can reach the patient from all sides – comfortably and conveniently.

MAX supports

The OPTIGrip handle with force sensor control and fully motorized tower movement mean positioning the imaging tower has never been easier. The position of the tableside controls and touch user interface provide fast and easy access to all table movements and imaging parameters for both right- and left-handed users – allowing you to concentrate on the examination and your patient.

MAX protects

SmartTouch ensures that the OPTIGrip handle is only active with the touch of a human hand, which prevents unintentional system movements. Combined with an imaging tower featuring active collision control, positioning the system is safer than ever before. The height-adjustable table, excellent patient access, and motorized detector park mean you avoid reaching over the patient – allowing a safer examination. Easier and more precise system positioning can not only shorten exam times, but also lower the dose for patients and staff.



The right dose

The comprehensive CARE dose reduction program decreases radiation exposure for patients and staff, without compromising image quality. The MAX dynamic flat panel detector, with a state-of-the-art cesium iodide scintillator, gives you the choice of low-dose DFR or full-resolution RAD images.

CAREFILTER

Automatic copper filters to reduce skin dose

CAREMATIC

Automatic exposure parameters

CAREMAX**

Dose area product measurement and monitoring

CAREVISION

Pulsed fluoroscopy with 30, 15, 10, 7.5, and 3 p/s

FluoroLoop*

Prospective and retrospective storage and review of fluoroscopy sequences

CAREPROFILE*

Radiation-free collimation using Last Image Hold (LIH) for orientation

CAREPOSITION*

Radiation-free patient repositioning using a virtual field display on the Last Image Hold (LIH)

*Option

**Option. CAREMAX is only optional for the Ysio Max option. It is standard on the Agile Max fluoro table.

MAX detection –
For the right image.

Sharper imaging – with a MAX dynamic flat detector

See things in a whole new way – with the first patient-side system featuring a high-coverage, flat detector for fluoroscopy and radiography: the MAX dynamic flat detector.

MAX your performance

The large 43 cm x 43 cm (17" x 17") flat detector delivers high-quality dynamic and static digital imaging and provides 116% more patient coverage than a 33 cm (13") image intensifier. The high heat-capacity tube is ideal for larger patients and longer procedures, allowing you to continue the exam and not have to wait for tube cooling.

MAX image quality

The MAX dynamic detector provides distortion-free images with up to 3.4 lp/mm that provide detailed patient information enhanced by unique DiamondView Plus. In fluoroscopy, Digital Density Optimization (DDO), Auto Shutter and Auto Window ensure improved contrast and more consistent image brightness across both live and still images, without loss of detail.

MAX efficiency

More patient coverage with the large flat detector means less tower movement – and better image quality lets you see what you need faster and easier. With the one-click registration, you get the optimal imaging parameters for your exam, which enables you to achieve the best image quality in the shortest amount of time possible with your system.

Up to 116% more image coverage with the flat detector



33 cm (13")
Image intensifier



43 cm x 43 cm (17" x 17")
Full view with MAX dynamic detector

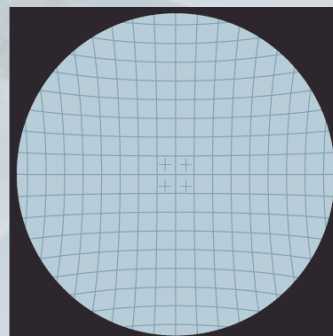
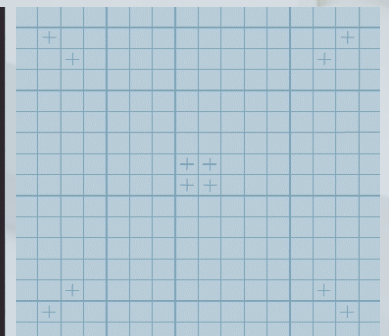


Image intensifier



MAX dynamic flat detector
Free of image distortion

Stronger synergies – with MAX dual use in radiography and fluoroscopy

With the Ysio Max option, Luminos Agile Max offers more than just radiography functions in a fluoroscopy room. The ceiling-mounted tube with the MAXtouch display, the table and wall stand Bucky with tracking, the MAX wi-D and MAX mini detectors and height-adjustable table enable the same high throughput workflow as an Ysio Max system. So you can optimize room use with the exam mix you have – today and in the future.

MAXswap* – The right way to share

Effortlessly swap a pool of MAX wi-D and MAX mini detectors between multiple Luminos Agile Max, Luminos dRF Max and Ysio Max systems – and add more detectors as your needs grow or change. The quick and easy one-click registration contains safeguards so you can be sure that the right detector is in the right place at the right time.

MAXtouch – Maximized comfort at your fingertips

The intuitive MAXtouch color touchscreen provides all the information you need for each patient and exam situation. You can change all image parameters and uniquely adjust the examination order, directly on MAXtouch while you remain with the patient.





MAX wi-D

A 35 cm x 43 cm wireless detector that weighs only 3 kg, is just 19 mm thin, and features a convenient handle



MAXalign

Eliminates the need to guess the detector angle

MAXalign – Get it right with the first shot

MAXalign displays the detector angle of the MAX wi-D and MAX mini directly on the MAXtouch. This eliminates the need to guess the detector angle and delivers enhanced image quality and consistency. Save valuable time while protecting your patients from repeat exposures with free exams.

MAX wi-D* – Lighter. Thinner. Faster.

Providing flexibility in use for table, Bucky wall stand, and free examinations, this 35 cm x 43 cm (14" x 17") wireless detector is only 3 kg (6.6 lbs) light and 19 mm (0.7") thin. It features a handle for safer transport and innovative automatic charging when it's in the table or wall stand tray.

*Option

MAX mini* – The right size

Get the image you need easier with MAX mini. This 24 cm x 30 cm (10" x 12") small wireless detector weighs just 1.6 kg (3.5 lbs). It's just the right size for those more difficult-to-position exams such as orthopedic, pediatric, and trauma imaging.



MAX mini

At 24 cm x 30 cm, 1.6 kg and 16 mm thin, MAX mini is the right size for specialized exams

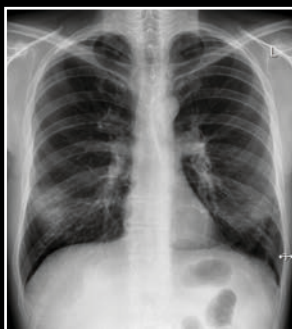
MAX image quality in radiography



Lateral Skull



Pediatric hand



P.A. Chest

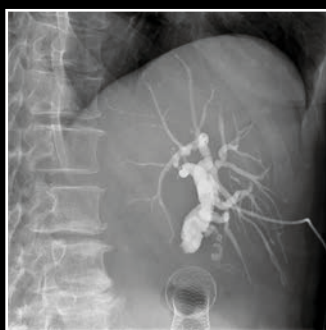


Pelvis



C. Spine

MAX image quality in fluoroscopy



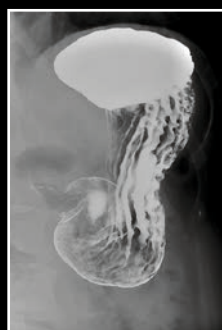
Percutaneous cholangiography



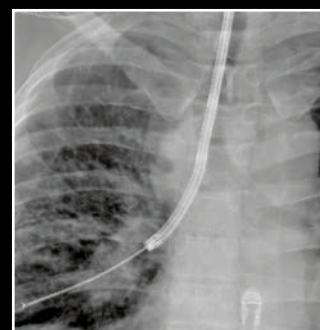
Barium swallow



Renal DSA



Upper G.I.



Bronchoscopy

Improved contrast and detail with DiamondView Plus and DDO



Without DiamondView Plus



With DiamondView Plus



Without DDO



With DDO

SmartOrtho* with automated tilting technique



Full leg, standing



Full spine, standing



Full spine, lateral

MAX detection –
For the right image.

MAX image quality

Image quality is key to a quality examination. That is why Luminos Agile Max with MAX detection applies Intelligent Innovation at every step of the imaging process. It's Siemens' unique way of providing comprehensive imaging technology.

DiamondView Plus

DiamondView Plus improves image contrast and detail, for outstanding quality of radiography images. It enhances bone detail and soft tissue contrast, without increasing the dose.

Digital Density Optimization (DDO)

DDO provides harmonization of high-contrast fluoroscopic images while improving contrast, without loss of detail in very light or dark areas. This enables more information to be visible across the entire image, which is especially important for structures with wide density variations.

Auto Shutter and Auto Window

Auto Shutter enhances contrast in both live and still images with automatic and dynamic adjustment of the collimated border to black. Auto Window ensures consistent live image brightness during patient or system movements, even in more difficult areas such as the chest.

syngo FLC

syngo FLC is your one-stop system that manages your entire examination workflow – from registration to documentation. The intuitive and easy-to-learn user interface is common to all Siemens systems. So you can concentrate on the examination and the patient, not the system.



SmartOrtho

Providing faster and easier ortho imaging, SmartOrtho* features an automated tilting technique for long leg and full spine imaging. It acquires up to four images on the table or Bucky wall stand to cover the selected region, automatically determines the number of exposures required, and composes them to a single image on the syngo FLC or on a separate workstation*.

Quality management

The integrated quality management system with Luminos Agile Max offers a Clinical Assurance Program (CAP) with reject analysis, Exposure Index (EXI) and Deviation Index (DI) Monitoring, and DICOM Dose Reporting. So you have a full overview of dose and image quality – enabling you to monitor system performance and determine staff training needs. Sent via DICOM to PACS and to RIS by MPPS, patient dose documentation is automatic and complete, and flexible according to your needs.

*Optional.



syngo FLC

Touch user interface

DiamondView Plus
Digital Density Optimization
Auto Shutter
Auto Window

Comprehensive
tableside controls

Height-adjustable table

CARE program

*Option

Luminos Agile Max

A more RADical way in fluoroscopy



SIEMENS

SIEMENS

Luminos Agile Max

MAXtouch
MAXalign

OPTIGrip with
SmartTouch

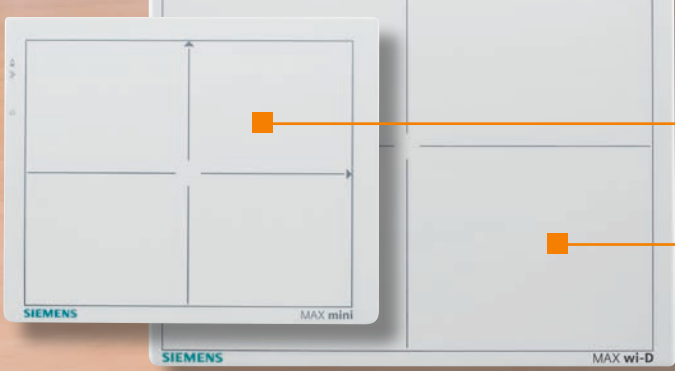
MAX dynamic
detector

SmartOrtho*
on wall stand

SmartOrtho*
on table

MAX mini*

MAX wi-D*



Luminos Agile Max is not commercially available in all countries. Due to regulatory reasons, its future availability cannot be guaranteed. Please contact your local Siemens organization for further details.

On account of certain regional limitations of sales rights and service availability, we cannot guarantee that all products/services/features included in this brochure are available through the Siemens sales organization worldwide. Availability and packaging may vary by country and are subject to change without prior notice.

The information in this document contains general descriptions of the technical options available and may not always apply in individual cases.

Siemens reserves the right to modify the design and specifications contained herein without prior notice. Please contact your local Siemens sales representative for the most current information.

In the interest of complying with legal requirements concerning the environmental compatibility of our products (protection of natural resources and waste conservation), we may recycle certain components where legally permissible. For recycled components, we use the same extensive quality assurance measures as for factory-new components.

Any technical data contained in this document may vary within defined tolerances. Original images always lose a certain amount of detail when reproduced.

Siemens Healthcare Headquarters

Siemens Healthcare GmbH
Henkestr. 127
91052 Erlangen
Germany
Phone: +49 9131 84-0
siemens.com/healthcare

Order No. A91XP-80012-3C1-7600 | Printed in Germany | CC XP 1738 02162. | © Siemens Healthcare GmbH, 2016

siemens.com/healthcare